



MICRONISED MINERAL INDUSTRY





SINPAŞ HOLDİNG 40.YIL

Sinpaş Holding in Brief

Sinpaş Holding, representing foremost industrial and finance companies, is a group of affiliates owned by the Çelik family.

The forming Sinpaş Holding has founded by the founding of Sinpaş Yapı Endüstrisi ve Ticaret A.Ş. in 1974 by Mr. Avni Çelik, Civil Engineer. As of the 1990s Sinpaş has been one of the leading developers in the real estate sector in Türkiye.

Sinpaş Holding consists of more than 23 companies, almost all of which are the leader in their respective fields. Primary activity fields of Sinpaş Holding are property and luxury housing projects, residences and commercial real estate production and management, financial services, granite-ceramic production, calcite production, wooden furniture manufacturing, real estate brokerage and leasing services. In addition to its affiliates, the group also has stakes in many companies with many domestic and foreign partners.

As a respected brand, Sinpaş Holding with its strong collaborations along with its knowledge and experience in the Turkish market has grown in its primary fields of activity and had extended into world markets.

Sinpaş GYO is the only listed company in Sinpaş Holding. 51% of the Sinpaş GYO is owned again by Çelik family and the remaining 49% is the free float in ISE.

With the founding of Sinpaş GYO under the Real Estate Company Conversation project, Sinpaş Holding has aimed to combine the group's estate activities under one roof. The aim of the second stage of this project is to execute public offering of 49% of Sinpaş GYO shares to strengthen the financial structure. Through the procurement of new properties for housing development, creating financial resource for existing housing projects and also for developing now housing projects in other cities such as Ankara, Muğla, İzmir and Adana. Following the public offering if its shares, Sinpaş GYO has strengthened its position by increasing its competitive strength and by developing its corporate profile with the addition of respected corporate investors to its shareholders; it has combined its high brand strength with its developing corporate structure.



Sinpaş Gayrimenkul Yatırım Ortaklığı A.Ş.

Boasting a 40-year background and expertise in the real estate market, the Sinpaş reshaped their organization at the end of 2006 upon which it started to implement its activities for developing housing projects under the umbrella of Sinpaş REIT (GYO). Ranked second among top-demanded companies of the industry according to a research conducted by Capital in 2010, Sinpaş REIT(GYO) is a public real estate investment trust established pursuant to the relevant regulations of the Capital Market Board. Sinpaş REIT (GYO) is traded at the Istanbul Stock Exchange with a public share of 49% and a market value of 594 million TL.

Thanks to a strong workforce, a secure financial framework and sound management Sinpaş REIT(GYO) continues to create value for its shareholders and partners with 37% of shares representing Sinpaş REIT(GYO) capital actually circulating in the market. With its portfolio size of 1.85 billion TL, Sinpaş REIT(GYO) is ranked third among 21 real estate investment trusts currently traded in ISE.

Maintaining the mission of the Sinpaş Holding that contributes to the urban transformation process of Turkey by appealing to an extensive customer audience and taking the lead in the development of prestigious residential areas in various regions, Sinpaş REIT(GYO) carries on its operations across the same service and responsibility approach. While offering a favourable living space and profitable investment with its prestigious and exquisite projects on one side, Sinpaş REIT(GYO) contributes to developing and enhancing the areas within its investment scope on the other side.

Sinpaş REIT's(GYO) prospect is to convey to future its deep-rooted expertise in land development, project design, marketing and sales with its highly qualified and experienced staff, and to turn out to be the leader company of Turkey in the housing market.



Servet Gayrimenkul Yatırım Ortaklığı A.Ş.

SERVET GYO was established with the aim of gathering all commercial real estate projects that are in the portfolio of Sinpaş Holding and all of the accumulated experience and knowledge under the same roof. Commercial Real Estates, Shopping Malls, Industrial Service buildings,etc.. are managed by SERVETGYO in the Holding.

Servet Real Estate Investment Company was incorporated in May 2009 with the consent of Capital Markets Board in order to gather all commercial and industrial real estate such as shopping malls, office buildings, business and industrial centers, warehouses and logistics centers which are already under the portfolio of Sinpaş Group and will be constructed in the future under a single roof.It is aimed to achieve fixed rent income instead of sales income.

Servet Real Estate Investment Company is currently maintaining its studies for forming a portfolio and plans to go public in as immediate as possible and to take part amongst the top ranked three real estate investment companies of Turkey.



Sinpaş Yapı Endüstrisi ve Ticaret A.Ş.

Established in 1974 as a construction company in Ankara and moved to Istanbul in 1985. The company was responsible from the sales and marketing of the real estate projects developed within the Group. Sinpaş Yapı has completed 11 projects with 740.000 sqm construction area consisting of approx. 4.500 housing units to date. As of today the company undertakes the construction activities and continues to develop commercial properties.



Seranit Granit Seramik San. Tic. A.Ş.

As being the first ceramic producer of Turkey, Seranit produces flooring and sidings by the transfer of glass into ceramic under the world renowned "Seranit" brand in the largest integrated facilities in Europe. The company has yearly 8,5 million sqm production capacity and its sales network includes 258 point of sales in Turkey with more than 50 showrooms and 82 point of sales in 21 foreign countries. The company exports the most of its products to the foreign markets.



Prodek Yapı Dekorasyonu San. Tic. A.Ş.

Until 2004 the company, which produces high quality wooden furniture for kitchens and bathrooms under the "Vanucci" brand, only furnished its services to Sinpaş, however since 2005 it has expanded its operations to the domestic market.



Mikron'S started operations in year 2004, in city Niğde which is well known about white and pure Calcium Carbonate reserves. Mikron'S faced a high demand from the market due to wide product range and quality.

Even to evaluate, Turkey's local resources and not to expose country's entrepreneurs high import cost of performance minerals, that can be produced locally, Mikron'S used last version technology of it's kind when plant was erected. Initial production capacity, was 120.000 tons per year before putting new ball mills into service, to produce 250.000 tons per year. Mikron'S also operating it's own mines which is the key role in this business segment.

Mikron'S has started to export to surrounded markets under a brand name Turkcarb® and faced high demand. Other industrial minerals like Talc, Baryte, Kaolin, Mica, etc... are also in our product range to evaluate cost advantages of country's own resources.

Research and Development activities will shape the future of Mikron'S, with the help of qualified academic and experienced staff that mainly focused on functional usage of industrial minerals.

Main Turkish and International Quality Management systems have been operated in Mikron'S, to satisfy our customers and suppliers demands.

Mikron'S proudly declares to continue investments in industrial mineral segments to serve our customers.



QUARRIES AND RAW MATERIAL



Mikron'S plant located on the Niğde-Kayseri Motorway and constructed on 130.000 m² area, with 9 sub plants.

FACTORIES



Calcium Carbonate as a vital mineral, has so many application fields in industry. Eventhough, there are so many reserves in Turkey, the best reserves which are the whitest and purest, are found in city Niğde, in Turkey.

Mikron'S operating it's own quarries, which are capable of supplying long term raw material demands. Quarries are located 4 km close to plant, and operated by modern machineries.

Pretreatment facility of quarries are located on 350 hectares area.

Mikron'S also started to operate owned Talc mines since 2012 in Turkiye.



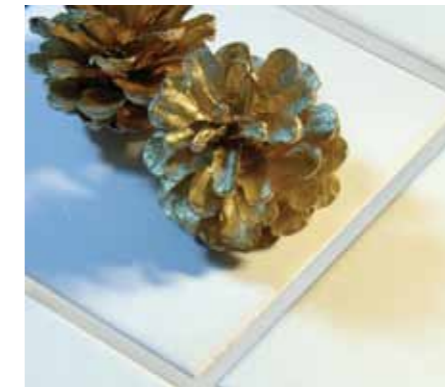
Mikron'S initial investment was ATR lines, that were started to operate in late 2004 to produce very fine Calcium Carbonate products. Ball mill units started to operate in year 2005 to produce fine products with high capacities. Mikron'S continues to make investments, since the begining. Ceramic lined Talc Plant which is sole in Turkey, high capacity granules factory, Post Separation enriched micronisation factory and extra capacity fulfilled coating plants had taken into service in last 2 years.

All precautions taken, to overcome any problems related with environmental and workforce issues. Food Approvals and Hygenic procedures are approved by independent and governmental insititutions. Mikron'S plant is certified by Ministry of Food and Agriculture of Turkey. Warehouse is 7.500 m² and can capable of handling palletized materials for urgent deliveries. All different packing types including silotrucks are possible to handle in factories.

Plant layout is so arranged that to increase the capacities for future enlargements.

Mikron'S Research and Development activities started in its own laboratories, to increase the functionality of industrial minerals. R&D facilities and projects are approved and also supported by national and international institutions.

Mikron'S Reserach and Development Laboratory will become a very special and unique laboratory very soon.



EXPORT & LOGISTICS

Mikron'S always take care the responsibility of service, that should be assisted by it's products.

INDUSTRIES WE SERVE



Mikron'S high production capacity should reach to customers with different type of transport techniques in earliest convenience. Diffrent transport types like truck, train, container and conventional shipping can be operated with operational logistics chain with the help of owned warehouses in the plants and Iskenderun Port, which is capable of storage 20.000 tonnes of end products with different packaging.

Mikron'S able to load conventional vessel with full capacity in 36 hours, with the help of independent and quick loading and unloading systems and terminals.

Mikron'S operating its own vessels and train vagoons to optimize logistics for own need.

- Silotruck
- Pallettized
- Bigbag
- Bulk
- Silo Containers

Type of packaging could be operated in all warehouses, terminal and plant.



Mikron'S supply products and services, to solve the problems of it's customers.

Mikron'S products used as functional additives to decrease costs while increasing product properties.

Segments Served;

- Adhesives, Caulks and Sealants
- Auto care
- Coal mining
- Construction/ Building Chemicals
- Health & Nutrition
- Lawn/Landscape/Agriculture
- Oil Well Drilling
- Paints, Inks and Coatings
- Personal Care
- Plastics
- Rubber
- Sport Field Marking
- Water Treatment



Talc is usually green, white, gray, brown or colorless. It is a translucent mineral with a pearly luster. It is the softest known mineral and is assigned a hardness of 1 on the Mohs Hardness Scale.

The main characteristics of talc are:

- It's naturally hydrophobic and organophilic
- It's inert and resist very well to acids and alkalis
- It's the softest mineral in the world
- It's a good electric and thermal insulator
- It's neither inflammable nor explosive

MIKRON'S TALK-S grades have nodular crystal lattices. Nodular crystal system is similar to hexagone. It is not lamellar and flat. Mikron'S Talk-S grades are used in paint, rubber, food and cosmetic industry as they do not contain heavy metal.



Mikron'S TALK



MIKRON'S TALK PREMIER is fine, lamellar talc grade. Normally it is difficult to grind lamellar talc. Lamellar talc can be fined without distorting it's structure due to advanced technology of Mikron'S.

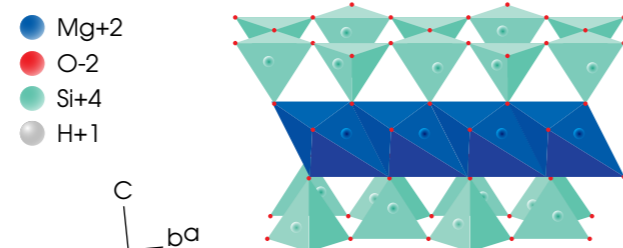
Most people are familiar with the mineral talc. It can be crushed into a white powder that is widely known as "talcum powder". This powder has the ability to absorb moisture, absorb oils, absorb odor, serve as a lubricant and produce an astringent effect with human skin. These properties make talcum powder an important ingredient in many baby powders, foot powders, first aid powders and a variety of cosmetics.

A form of talc known as "soapstone" is also widely known. This soft rock is easily carved and has been used to make ornamental and practical objects for thousands of years. It has been used to make sculptures, bowls, countertops, sinks, hearths, pipe bowls and many other objects.

Although talcum powder and soapstone are two of the more visible uses of talc they account for a very small fraction of talc consumption. Its hidden uses are far more common. Talc's unique properties make it an important ingredient for making, paint, paper, roofing materials, plastics, rubber, insecticides and many other products. minnesotaite. When large amounts of Al substitute for "Mg" the mineral is known as pyrophyllite.

What is Talc?

Talc is a hydrous magnesium silicate mineral with a chemical composition of $Mg_3Si_4O_{10}(OH)_2$. Although the composition of talc usually stays close to this generalized formula, some substitution occurs. Small amounts of "Al" or "Ti" can substitute for "Si"; small amounts of "Fe", "Mn" and "Al" can substitute for "Mg"; and, very small amounts of Ca can substitute for "Mg". When large amounts of "Fe" substitute for "Mg" the mineral is known as minnesotaite. When large amounts of Al substitute for "Mg" the mineral is known as pyrophyllite. Talc is usually green, white, gray, brown or colorless. It is a translucent mineral with a pearly luster. It is the softest known mineral and is assigned a hardness of 1 on the Mohs Hardness Scale.



NODULAR TALC

FLEXIBILITY Contributes to Product Enhancement

Mikron'S Talc products can be classified into two main groups which are NODULAR and LAMELLAR grades in general. NODULAR grades are typical talc grades for enhancement of matting effect, hiding power and rheology in paint formulations. NODULAR talcs are also very important for food, pharma, cosmetics, rubber and paper applications. NODULAR Talc reserves are very seldom throughout the world.

- High specific surface area
- Excellent film flexure formation
- Good hiding power
- Improved matting effect
- Non health hazard
- Traces of impurities

LAMELLAR TALC

Mikron'S LAMELLAR Talc grades are extremely white high aspect ratio talc products in general. LAMELLAR grades increase barrier effect of the paint film by increasing hiding power, mud crack and weather resistance. LAMELLAR Talc grades are white and produced with special grinding technique not to destroy it's natural lamellarity.

MIKRON'S TALK PREMIER is fine, lamellar talc grade. Normally it is difficult to grind lamellar talc. Lamellar talc can be fined without distorting it's structure due to advanced technology of Mikron'S.

- Improved aspect ratio
- High brightness and whiteness
- Good hiding power
- Good sanding effect
- Improved rheology control
- Excellent barrier effect

BARYTE

Pure Barium Sulphate products have high density and does not include any heavy metals. Selected Micronised Baryte grades will offer chemical resistance, high hiding power and extra gloss.

- Excellent puriness and whiteness
- Resistance against acids
- High density and brightness
- Gains impact properties
- Excellent optical properties
- Good dispersion capability
- Low oil absorption
- Outstanding UV resistance



Barium Sulphate (BaSO₄)



A EX Barite group of products are made from the highest quality white, natural high density barite ore. A EX barite has lower whiteness value than EX barite group. A EX products are not abrasive due to low SiO₂ content. A EX barytes have unique properties such as high specific gravity, low solubility and chemical inertness make them indispensable for many applications.

TYPICAL PROPERTIES

PRODUCT	BB ULTRA 1 EX	BB 1 EX	BB 5 EX	BB 20 EX	BB 30 EX
Median particle size (d50) - micron	1,85	2	3	4	6
Top Cut (d98) - micron	9,5	10	15	21	45
Oil absorption (ml/100 gr)	17 - 19	17 - 19	15 - 17	14 - 17	14 - 17
Bulk density (gr/ml)	1,4 - 1,65	1,4 - 1,65	1,65 - 1,75	1,65 - 1,85	1,9 - 2,0

CHEMICAL ANALYSIS OF THE RAW MATERIAL

BaSO ₄ (%)	90.00 - 97.00
SiO ₂ (%)	0.10 - 3.00
Fe ₂ O ₃ (%)	0.05 - 0.50
CaO (%)	1.00 - 4.00
Al ₂ O ₃ (%)	0.01 - 1.00

TECHNICAL CHARACTERISTICS

Hardness (Moh's)	3.25
pH (ISO 787/9)	8.50

WHITENESS (ELREPHO 3300 SPECTROPHOTOMETER DIN 53140)

Ry %86 - 88	R 457 %81 - 83	G 8. max
-------------	----------------	----------

TYPICAL PROPERTIES

PRODUCT	BB ULTRA 1 EX	BB 1 EX	BB 5 EX	BB 20 EX	BB 30 EX
Median particle size (d50) - micron	1,85	2	3	4	6
Top Cut (d98) - micron	9,5	10	15	21	45
Oil absorption (ml/100 gr)	17 - 19	17 - 19	15 - 17	14 - 17	14 - 17
Bulk density (gr/ml)	1,4 - 1,65	1,4 - 1,65	1,65 - 1,75	1,65 - 1,75	1,9 - 2,0

CHEMICAL ANALYSIS OF THE RAW MATERIAL

BaSO ₄ (%)	90.00 - 97.00
SiO ₂ (%)	0.10 - 3.00
Fe ₂ O ₃ (%)	0.05 - 0.50
CaO (%)	1.00 - 4.00
Al ₂ O ₃ (%)	0.01 - 1.00

TECHNICAL CHARACTERISTICS

Hardness (Moh's)	3.25
pH (ISO 787/9)	8.50

WHITENESS (ELREPHO 3300 SPECTROPHOTOMETER DIN 53140)

Ry %86 - 88	R 457 %81 - 83	G 8. max
-------------	----------------	----------

B EX Barite group of products are made from the highest quality white, natural high density barite ore. B EX barite has lower whiteness value than A EX barite group. B EX products are not abrasive due to low SiO₂ content. B EX barytes have unique properties such as high specific gravity, low solubility and chemical inertness make them indispensable for many applications.

EX Barite group of products are made from the highest quality white, natural high density barite ore. EX products are not abrasive due to low SiO₂ content. EX barytes have unique properties such as high specific gravity, low solubility and chemical inertness make them indispensable for many applications.

TYPICAL PROPERTIES

PRODUCT	BB ULTRA 1 EX	BB 1 EX	BB 5 EX	BB 20 EX	BB 30 EX
Median particle size (d50) - micron	1,85	2	3	4	6
Top Cut (d98) - micron	9,5	10	15	21	45
Oil absorption (ml/100 gr)	17 - 19	17 - 19	15 - 17	14 - 17	14 - 17
Bulk density (gr/ml)	1,4 - 1,65	1,4 - 1,65	1,65 - 1,75	1,65 - 1,75	1,9 - 2,0

CHEMICAL ANALYSIS OF THE RAW MATERIAL

BaSO ₄ (%)	90.00 - 97.00
SiO ₂ (%)	0.10 - 3.00
Fe ₂ O ₃ (%)	0.05 - 0.50
CaO (%)	1.00 - 4.00
Al ₂ O ₃ (%)	0.01 - 1.00

TECHNICAL CHARACTERISTICS

Hardness (Moh's)	3.25
pH (ISO 787/9)	8.50
Refractive Index	1.64

WHITENESS (ELREPHO 3300 SPECTROPHOTOMETER DIN 53140)

Ry %90 - 94, R 457 %85 - 90

STD Barite Group of products are natural, off-white and high density barytes produced in Şarkikarağaç-Isparta. STD products are not abrasive due to low SiO₂ content, high purity, high specific gravity and chemically inert. These specifications provide wide range of usage in various industries.

TYPICAL PROPERTIES

PRODUCT	BB ULTRA 1 EX	BB 1 EX	BB 5 EX	BB 20 EX	BB 30 EX
Median particle size (d50) - micron	1,85	2	3	4	6
Top Cut (d98) - micron	9,5	10	15	21	45
Oil absorption (ml/100 gr)	17 - 19	17 - 19	15 - 17	14 - 17	14 - 17
Bulk density (gr/ml)	1,4 - 1,65	1,4 - 1,65	1,65 - 1,75	1,65 - 1,75	1,9 - 2,0

CHEMICAL ANALYSIS OF THE RAW MATERIAL

BaSO ₄ (%)	90.00 - 97.00
SiO ₂ (%)	0.10 - 3.00
Fe ₂ O ₃ (%)	0.05 - 0.50
CaO (%)	1.00 - 4.00
Al ₂ O ₃ (%)	0.01 - 1.00

TECHNICAL CHARACTERISTICS

Hardness (Moh's)	3.25
pH (ISO 787/9)	8.50

WHITENESS OFF COLOR



CHIPS AND GRANULES

Mikron'S produce the very white Turkcarb® CGR, CGR-H and DGR granules for decorative plasters and other applications.



DOLOMITE

Mikron'S CGR grades can be used in wide range of applications like exterior decorative coatings, plasters and textured coatings. Particle distribution and colour parameters of Mikron'S CGR and CGR-H grades are so adjusted that, they can meet demands of global common recipes.

CALCIUM CARBONATE

- Low binder absorption
- Dust free productions
- Homogenous particle distribution
- Black spot free products
- High production capacity
- Controlled tinting capability
- High and long lasting brightness
- Excellent optical effect and opacity

DOLOMITE

- Low binder absorption
- High brightness
- Dust free products
- Acid resistance
- Homogenous particle distribution
- Black spot free products
- High production capacity
- Controlled tinting capability
- Perfect durability in exterior applications

Micronised Mikron'S Dolomite grades have wide usage in;

- General decorative, rust proofing paints
- Road marking paints
- PUR, polyester and epoxy resins
- ABS, SAN and other thermoplastics.
- Water based paints
- Plasters
- Matt wall paints
- Concrete and gloss paints
- Undercoats and rustproofing primers
- Coil coatings
- Road marking paints
- Adhesives, silicone and sealing compounds

Dolomite is double carbonate of calcium and magnesium. Chemical formula of dolomite is clusters of $\text{CaMg}(\text{CO}_3)_2$ Extremely Pure and White dolomite deposits are found in Turkey, where name "marble" took it "original name during history from Anatolia. Homogenous Crystalline structure with high natural whiteness are all main parameters of Mikron'S Dolomite grades.

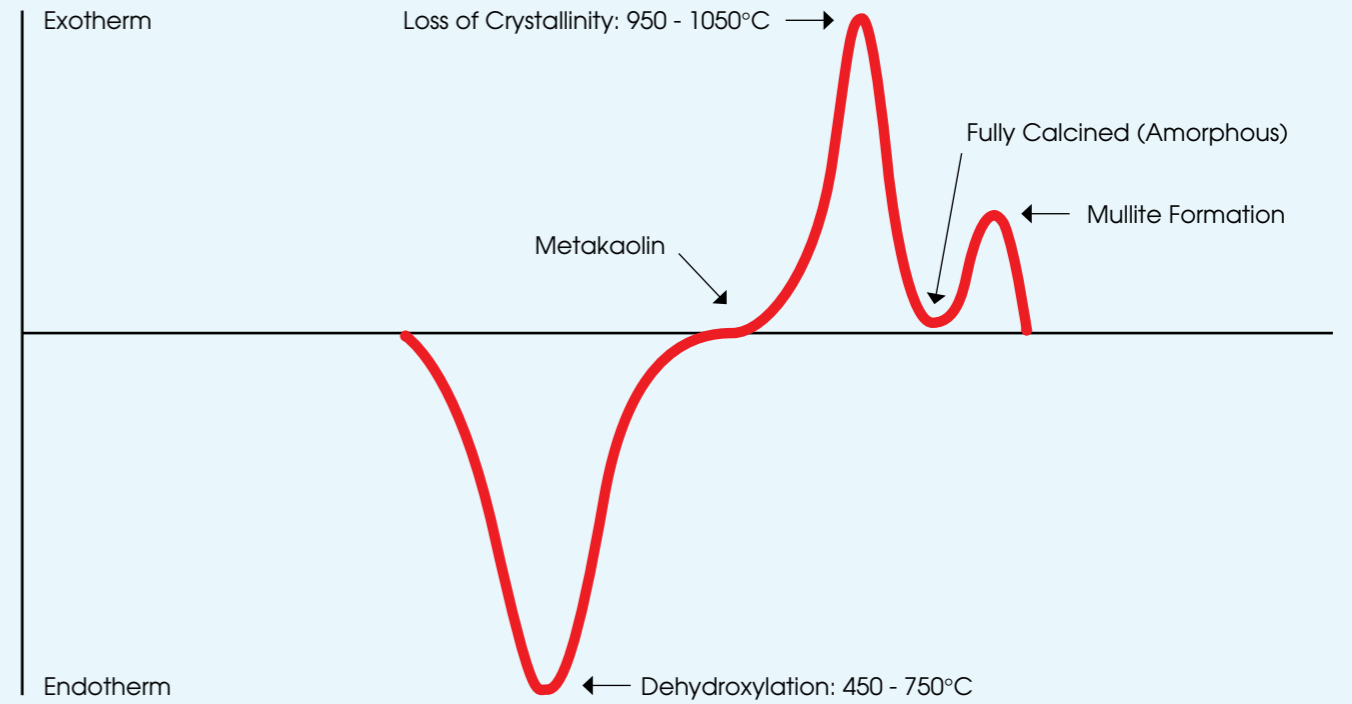
Dolomite is harder and more dense than Calcium Carbonate, and slightly more acid resistant than Calcium Carbonate.

Typical Aspect Ratio:	3:1
Specific Gravity:	2.85
Refractive Index:	1.60
MOH Hardness:	3.5
Moisture: (max %)	0.2
pH:	9-10

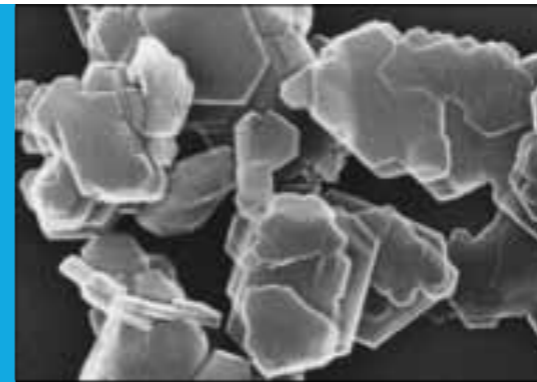
Usage of Dolomite improves weatherability and mechanical stability, reduces shrinkage and internal stress, eliminates crack development and water adsorption.



DIFFERENTIAL THERMAL ANALYSIS FOR KAOLIN CALCINATION



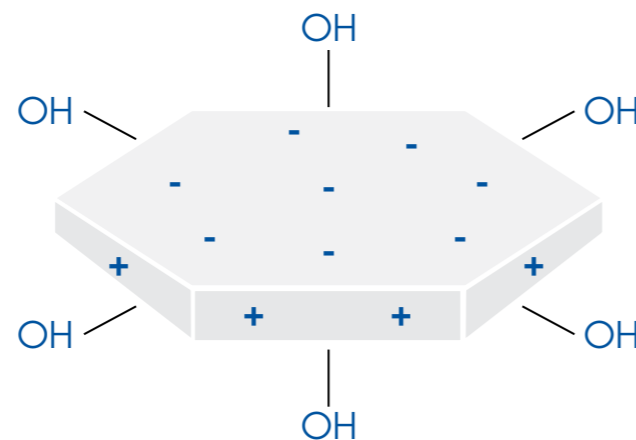
KAOLIN



Mikron'S Kaolin grades classified into three main groups. Ball Kaolins(Clays), Hydrous Kaolins and Calcined Kaolins. Kaolin (China Clay) is nearly White in colour derived from mineral Kaolinite. Chemical Formula is composed from clusters of $Al_2O_3 \cdot 2H_2O \cdot 2H_2O$

Specific Gravity	2.6
Aspect Ratio (Average)	8/1 - 100/1 - 20/1
Refractive Index	1.56
MOH Hardness	2.5
Solubility in Water	NO
Inert Against Acids	

Natural Kaolins also classified in two main groups, primary and secondary as a raw material. Primary kaolins are found naturally where they exist. Secondary Kaolins are washed and deposited away from primary kaolins. Lower impurities and high brightness are main parameters to differentiate secondary kaolins from primary kaolins. Selected and washed secondary kaolins are used to produce hydrous kaolins on industrial scale.



BALL CLAYS

Mikron'S Kaolin grades are pure and White ball clays that could be used in many areas like plastics, rubber, paints and coatings. Mikron'S Kaolin grades enhance; Opacity, Mud crack resistance, scrub resistance, corrosion resistance and resistance to chalking in many paint formulations.

HYDROUS CLAYS

Mikron'S Hydrous Kaolins widely accepted as a coating clay in paints, coatings and plastics, thanks to its excellent opacity and hiding power. Hydrous Clays also serves as an extender in coatings and hard clay in rubber systems.

CALCINED CLAYS

Calcined Clay is formed when kaolin is heated above 980°C. It has an amorphous structure with some hydroxyl (-OH) groups at the surface. If heated above 1200°C, hard and abrasive mullite is formed. Calcined clay has the highest refractive index after TiO_2 among all industrial minerals that used in manufacturing industries. For this reason, Calcined Clays are widely used to save TiO_2 in paints and coatings. Mikron'S Calcined Kaolin grades have very fine particle size with extreme whiteness to help users to make optimum formulations.



RESEARCH AND DEVELOPMENT

Mikron's treat research and development as the guarantee of its future. Mikron's gave importance to development of new products and applications in order to follow global improvements rapidly.

Mikron's carrying out research and development activities in its laboratories which facilitated with outstanding equipments and services.

Collaborating with universities and scientific foundations worldwide, Mikron's take academic assistance to shape its studies into a product.

Improvements, investments and awards symbolize the passion of Mikron's, which produces its own products to create world-class quality.

Mikron's allocates 4% of its turnover to the R&D expenditures approaching the target to more strengthen its competitive position in the sector, and to become one of the important producers in the world.

Mikron's continue to challenge in research and development by working international independent institutions and scientists.



PRODUCT GROUPS

MICRONISED CALCIUM CARBONATE

TURKCARB® UF
 TURKCARB® 95
 TURKCARB® 75X
 TURKCARB® 65
 TURKCARB® 1
 TURKCARB® 1K
 TURKCARB® 2
 TURKCARB® 2K
 TURKCARB® 2X
 TURKCARB® 3
 TURKCARB® 5
 TURKCARB® 5K
 TURKCARB® 10
 TURKCARB® 15
 TURKCARB® 15K
 TURKCARB® 20
 TURKCARB® 40K
 TURKCARB® 60K
 TURKCARB® 130K

CHIPS AND GRANULES (CaCO₃)

TURKCARB® CGR G130
 TURKCARB® CGR H130
 TURKCARB® CGR 0105
 TURKCARB® CGR 0208
 TURKCARB® CGR 0305
 TURKCARB® CGR 0307
 TURKCARB® CGR 0512
 TURKCARB® CGR 1.0-1.5
 TURKCARB® CGR 1.5-2.0
 TURKCARB® CGR 2.0-2.5
 TURKCARB® CGR 2.5-3.0
 TURKCARB® CGR 3.0-3.5

TALC

MIKRON'S TALK PREMIER
 MIKRON'S TALK 20
 MIKRON'S TALK 3X
 MIKRON'S TALK 5X
 MIKRON'S TALK 5XK
 MIKRON'S TALK 5XH
 MIKRON'S TALK 10X
 MIKRON'S TALK 5STD
 MIKRON'S TALK 20STD
 MIKRON'S TALK 15M
 MIKRON'S TALK 40
 MIKRON'S TALK 40KN
 MIKRON'S TALK 3SX
 MIKRON'S TALK 5SX
 MIKRON'S TALK 5SXP
 MIKRON'S TALK 10SX
 MIKRON'S TALK 15SX

COATED CALCIUM CARBONATE

TURKCARB® UFC
 TURKCARB® 95C
 TURKCARB® WIN
 TURKCARB® WIN EXTRA
 TURKCARB® 100C
 TURKCARB® 65C
 TURKCARB® FP
 TURKCARB® FP 55
 TURKCARB® FP 45
 TURKCARB® 1C
 TURKCARB® 1KC
 TURKCARB® 2C
 TURKCARB® 2KC
 TURKCARB® 3C
 TURKCARB® 5C

MICA

MIKRON'S MICA 20
 MIKRON'S MICA 40
 MIKRON'S MICA 60
 MIKRON'S MICA 80
 MIKRON'S MICA 100
 MIKRON'S MICA 300
 MIKRON'S MICA 0205
 MIKRON'S MICA 0512

DOLOMITE

MIKRON'S DOLOMITE 1
 MIKRON'S DOLOMITE 2
 MIKRON'S DOLOMITE 3
 MIKRON'S DOLOMITE 5
 MIKRON'S DOLOMITE 10
 MIKRON'S DOLOMITE 20
 MIKRON'S DOLOMITE 40
 MIKRON'S DOLOMITE 63
 MIKRON'S DOLOMITE 100
 MIKRON'S DGR 0207
 MIKRON'S DGR 0512
 MIKRON'S DGR 1.0-1.5
 MIKRON'S DGR 1.5-2.0
 MIKRON'S DGR 1.0-2.0
 MIKRON'S DGR 2.0-3.0

BARYTE

MIKRON'S ULTRA 1EX
 MIKRON'S ULTRA 1AEX
 MIKRON'S ULTRA 1BEX
 MIKRON'S BB 1EX
 MIKRON'S BB 1AEX
 MIKRON'S BB 1BEX
 MIKRON'S BB 5EX
 MIKRON'S BB 5AEX
 MIKRON'S BB 5BEX
 MIKRON'S BB 20EX
 MIKRON'S BB 20AEX
 MIKRON'S BB 20BEX
 MIKRON'S BB 30EX
 MIKRON'S BB 30AEX
 MIKRON'S BB 30BEX
 MIKRON'S ULTRA 1STD
 MIKRON'S BB 1STD
 MIKRON'S BB 5STD
 MIKRON'S BB 20STD
 MIKRON'S BB 30STD
 MIKRON'S BB 20M

KAOLIN

BALL
 MIKRON'S Kaolin 3
 MIKRON'S Kaolin 3SX
 MIKRON'S Kaolin 5
 MIKRON'S Kaolin 5SX
 MIKRON'S Kaolin 20
 MIKRON'S Kaolin 20SX

HYDROUS
 MIKRON'S HG 90
 MIKRON'S HG 80
 MIKRON'S HG 70
 MIKRON'S META

CALCINED
 MIKRON'S CK 70/90
 MIKRON'S CK 80/95



MIKRON'S MICRONISED MINERAL INDUSTRY TRADE CO.

Head Office

Central Work Ticaret Merkezi
19 Mayıs Caddesi, No: 2 Aşağıdudullu - Ümraniye / İSTANBUL - TÜRKİYE
Tel: +90 216 466 66 44 Fax: +90 216 466 66 50 - 466 66 70

Factory

Niğde - Kayseri Yolu 7. km
NİĞDE - TÜRKİYE
Tel: +90 388 237 54 00 Fax: +90 388 237 54 10 - 237 54 11

www.mikrons.com.tr